

# R1-Shadow

CACTUX  
phantoms

Sample's holder with fiducial marker for both nanoCT and microCT measurements that allows for quick and intuitive correction of rotational stage inaccuracies and CT data registration for applications such as Dual-Energy CT or 4D CT. R1-Shadow is a multi-purpose solution that suits variable Field of View (FOV) limits and high precision requirements.



4 size options



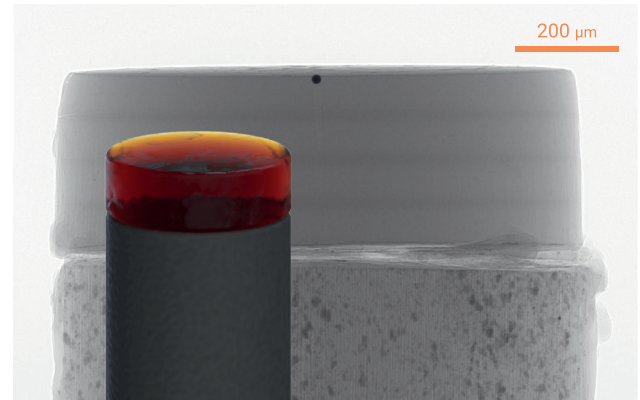
Quick and easy use



< 1 pixel precision of  
data registration



Data quality and  
precision enhancement



Radiogram of the holder

Carbon-fiber-reinforced  
carbon rod




### Parameters of R1-Shadow

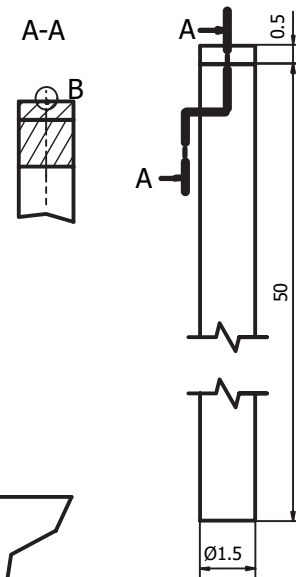
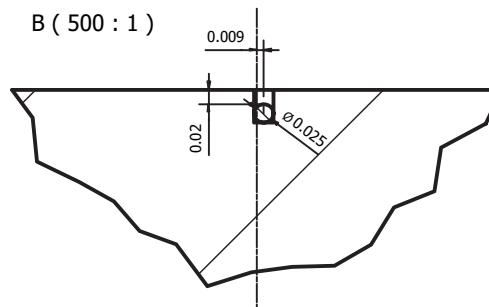
Size option	I	II	III	IV
Fiducial diameter [ $\mu\text{m}$ ]	25	25	50	100
Max. pixel size [ $\mu\text{m}$ ]*	2.5	2.5	5.0	10.0
Holder diameter [mm]	1.5	3.0	5.0	10.0
Holder length [mm]	50.5	50.5	50.5	50.5

Used materials	Carbon, kapton, stainless steel
Packaging options	3 pc., 5 pc., 10 pc.
Stage inaccuracies correction and registration procedure	imageJ plugin/ any image-processing software for CT data

\* Fiducial diameter should fit at least 10 pixels

### Standard Package

	R1-shadow (3 pc., 5 pc., 10 pc.)
Manual	
Description of correction and registration methodology	
ImageJ plugin	



\*all dimensions are in mm