

# SaguaroX S

Motorized xy translation stage for  $\mu$ CT stations for quick sample mounting and easy sample centering respect to the X-ray tube. SaguaroX is controlled wirelessly from outside of the CT cabinet.



Wireless  
allows 360° rotation



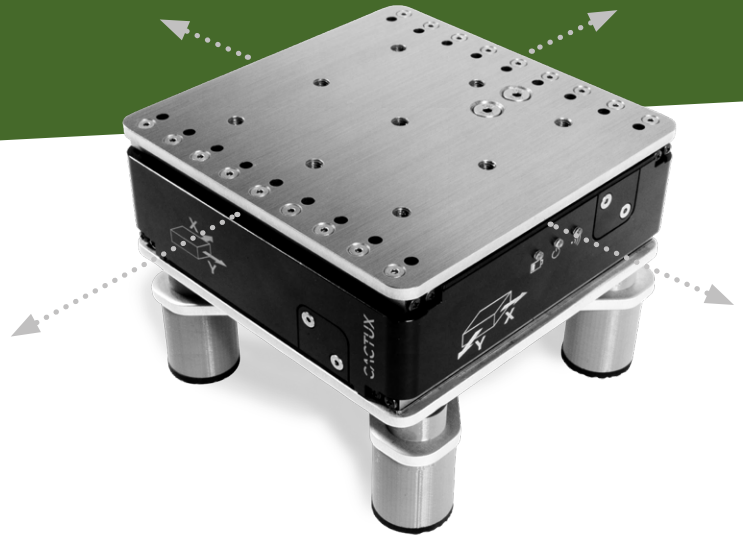
7 kg  
maximum load



8 h  
continuous run



Quick and easy  
sample mounting



**CACTUX**

## Parameters of SaguarioX S

x,y axes travel	50 mm × 50 mm
Sample area	135 mm × 135 mm
Maximum load	7 kg
Weight	2.6 kg
Dimensions	140 mm × 140 mm × 58 mm (w/o adapters)
Device battery	Li-ion (14.4 V/3.4 Ah)
Runtime	ca. 8 h continuous run (depends on the condition of device battery)
Operation speed	9 mm per second (fast movement)
Characteristics of the power supply	24V/2.5A with barrel connector (DC Jack) 5.5 x 2.1 mm
Input power	50 W
IP Code	IP20
RF Power	< 4 mW

## Standard Package

SaguarioX S
Transmitter USB Dongle
Flash Drive with Arizona Software
Desktop Stand
Mandrel
Adapter ø20, ø50 mm
Rod Holder (for Rod ø1 - 10 mm)

The device and its equipment are delivered in packaging designed for safe transport and storage. The package contains other components for mounting, including bolts and imbus key and USB extension cable for the purpose of transmitter connection. The device is charged using the Power Adapter included in the package.

